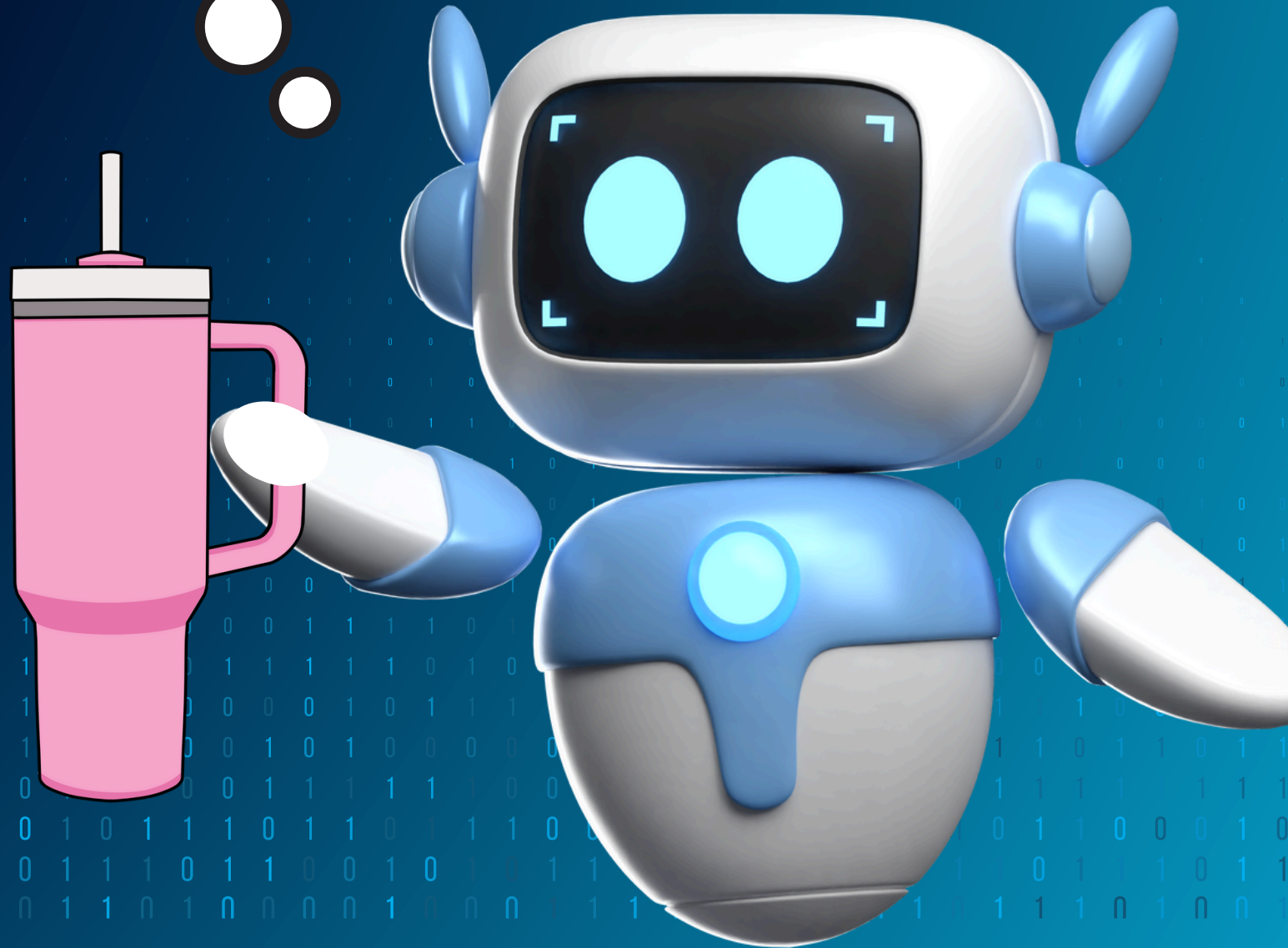


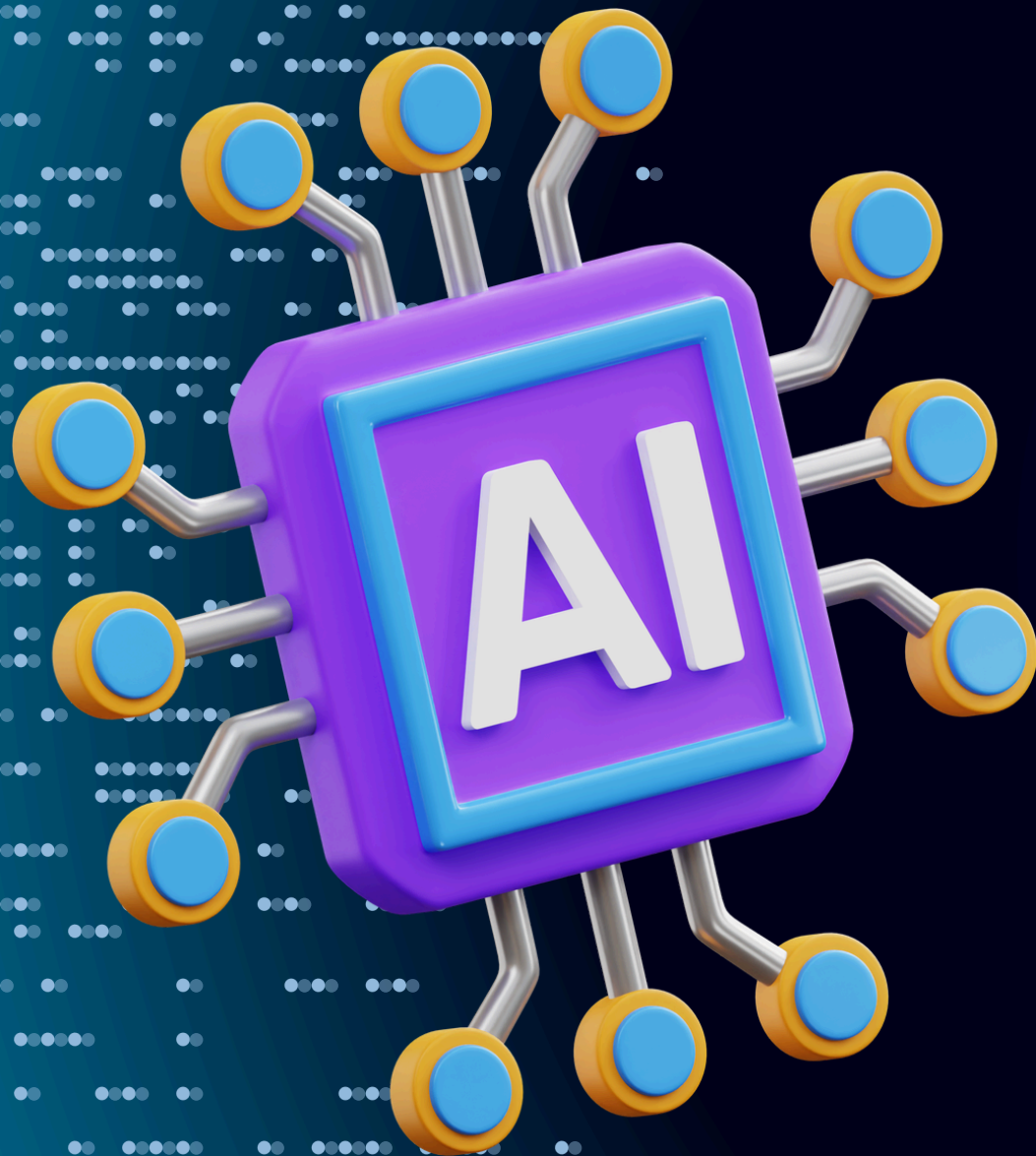


# Mini Lesson

I am so thirsty!

# Environment and A.I.





# TODAYS LESSON

- ① AI Usage
- ② AI is thirsty
- ③ For what to use AI

How much water does each of them use,  
ordered from *least to most*? (Per day)

**AI**



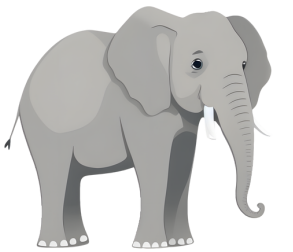
**You**



**Tree**



**Elephant**





Per day

**AI**



2 000 000



**You**



2-4



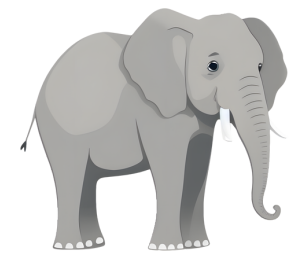
**Tree**



800



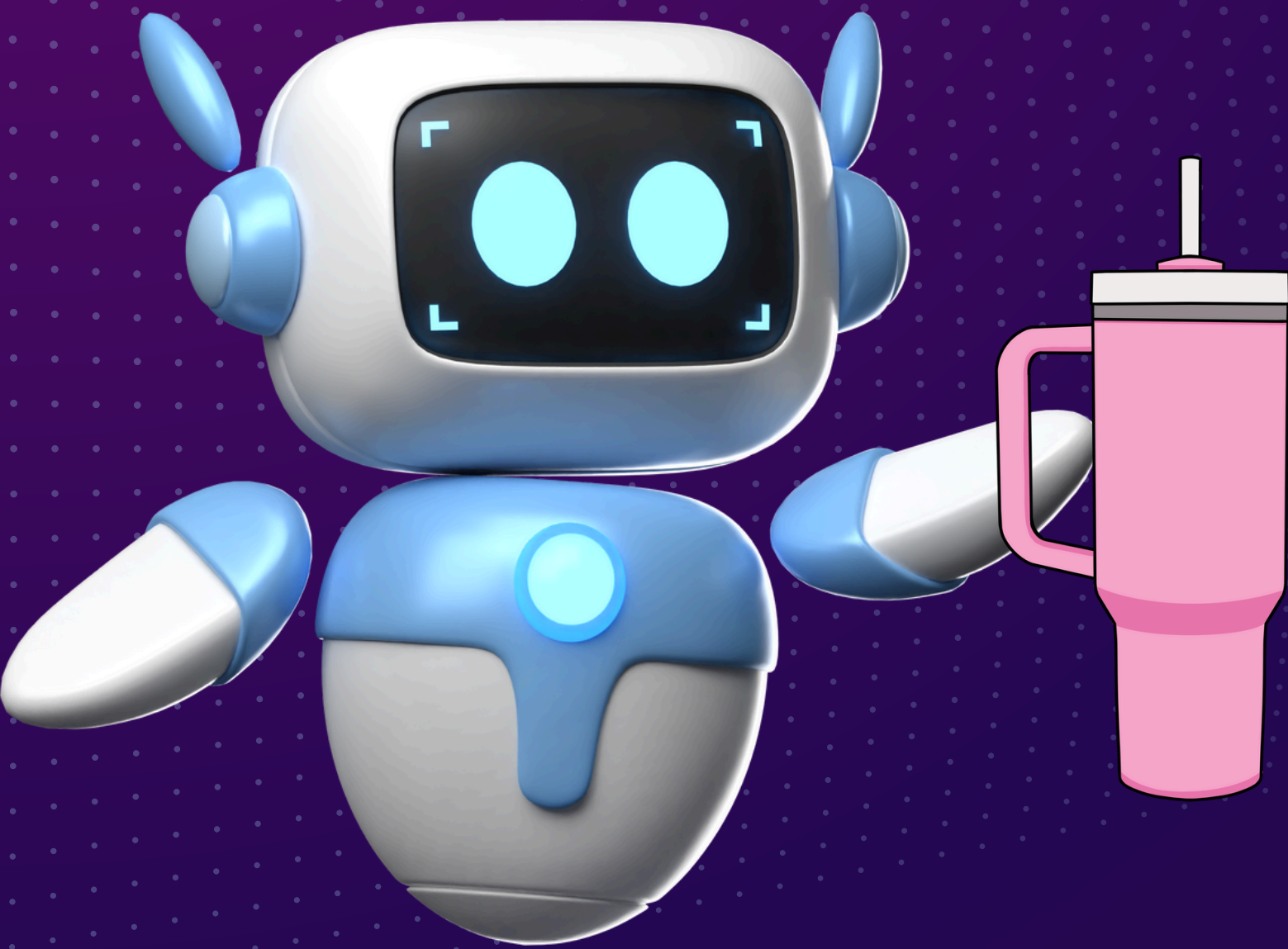
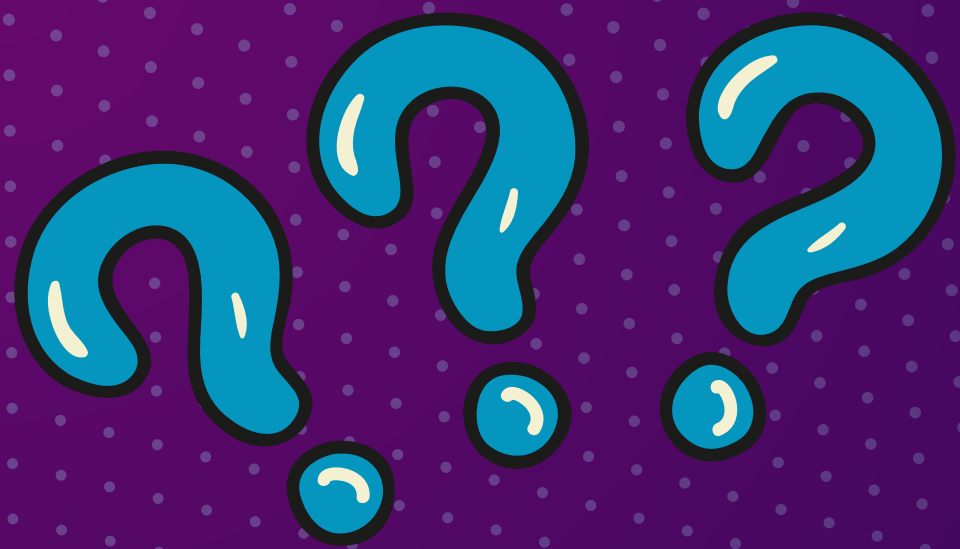
**Elephant**



400







Guess how much water I  
need to drink for the  
following things!



**1 ChatGPT answer.**



**1 ChatGPT answer.**

**1**







**1 Generated Image**



**1 Generated Image**

**2-3**





**1 Generated Song**



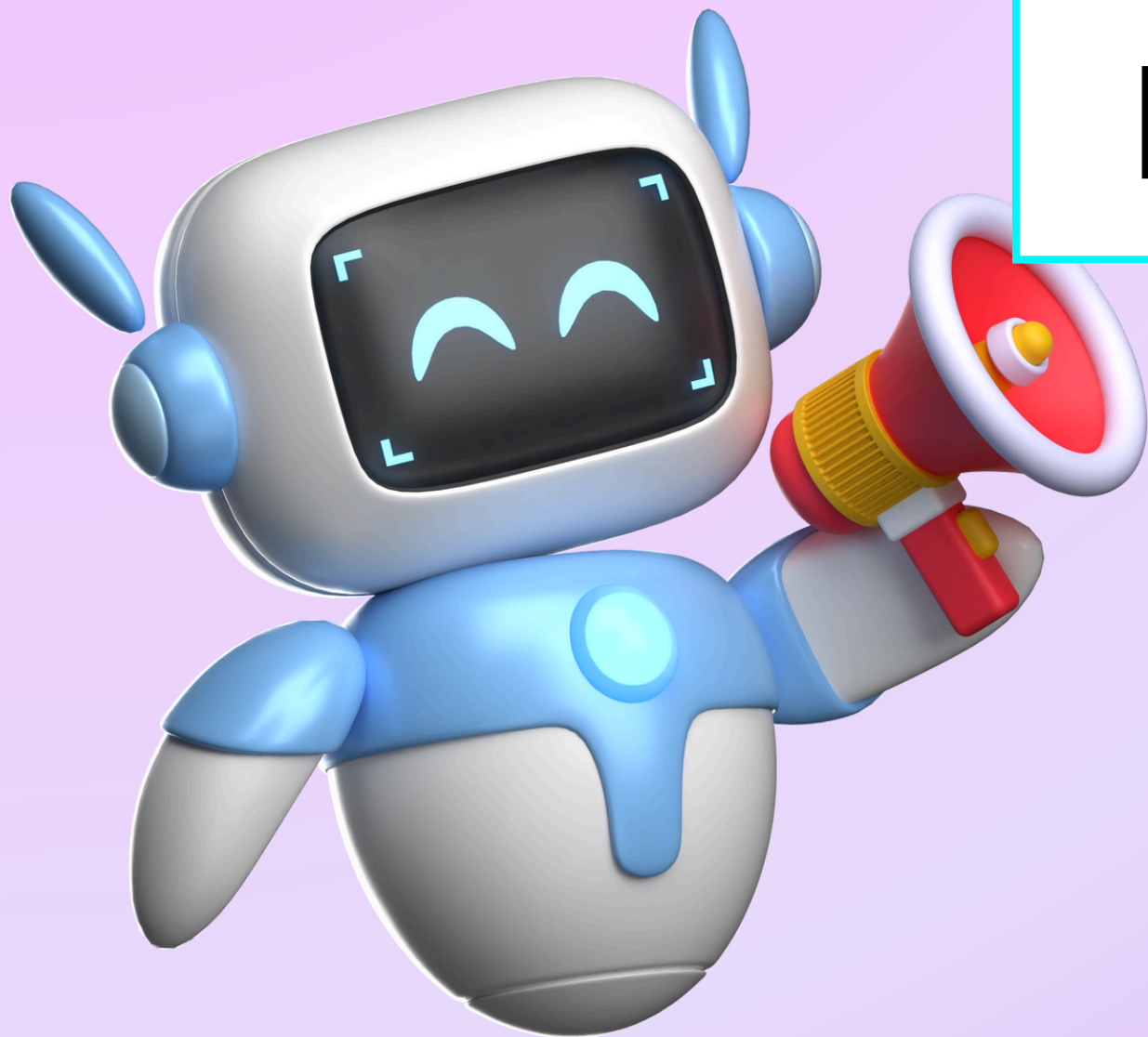


**1 Generated Song**

**4-5**



⚠ That means if the whole class asked AI just 5 times each... it could use over 100 bottles of water!

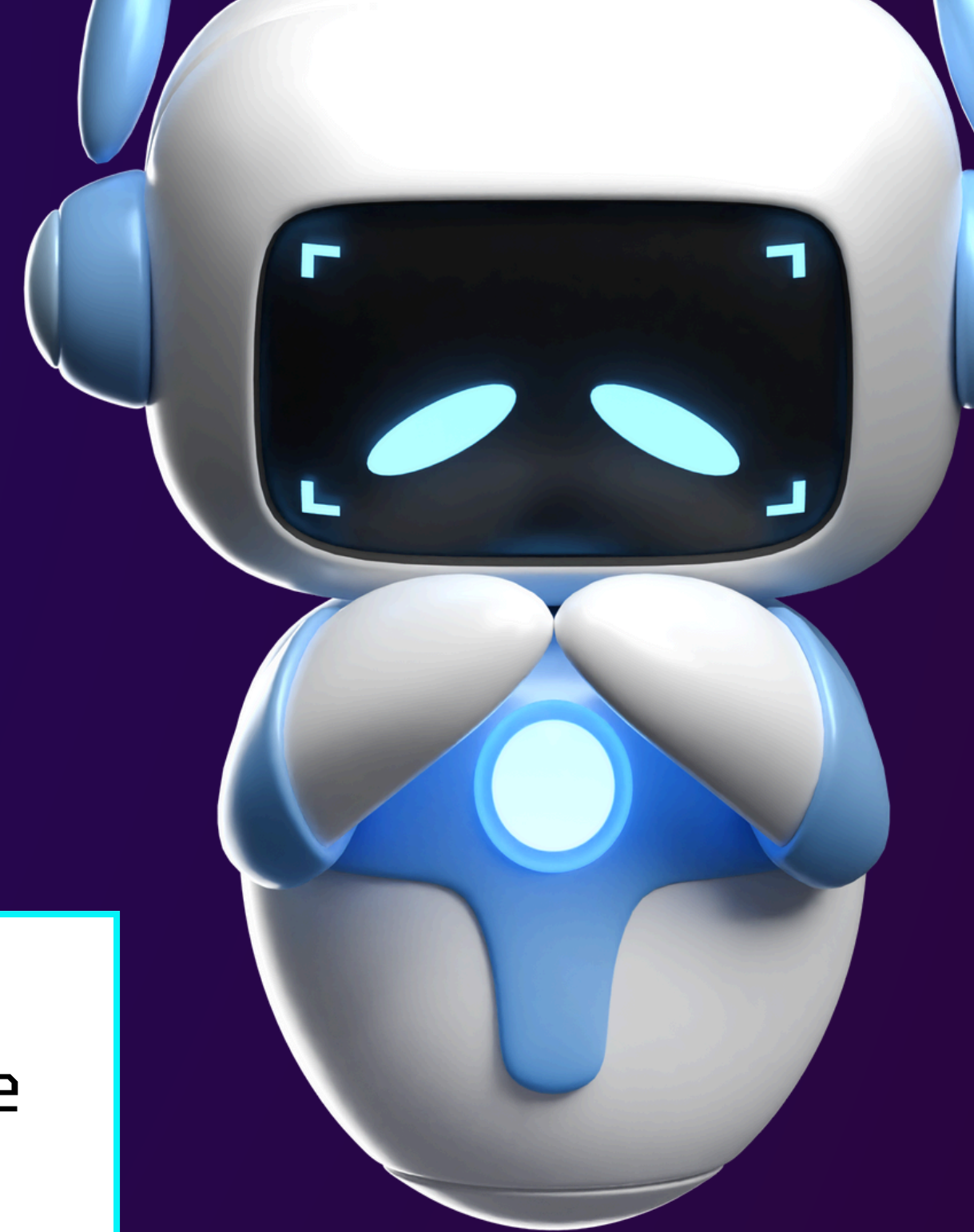




I need water to cool down  
the big computers that  
help me think—just like  
you need water after  
running around!  
I like it cool.

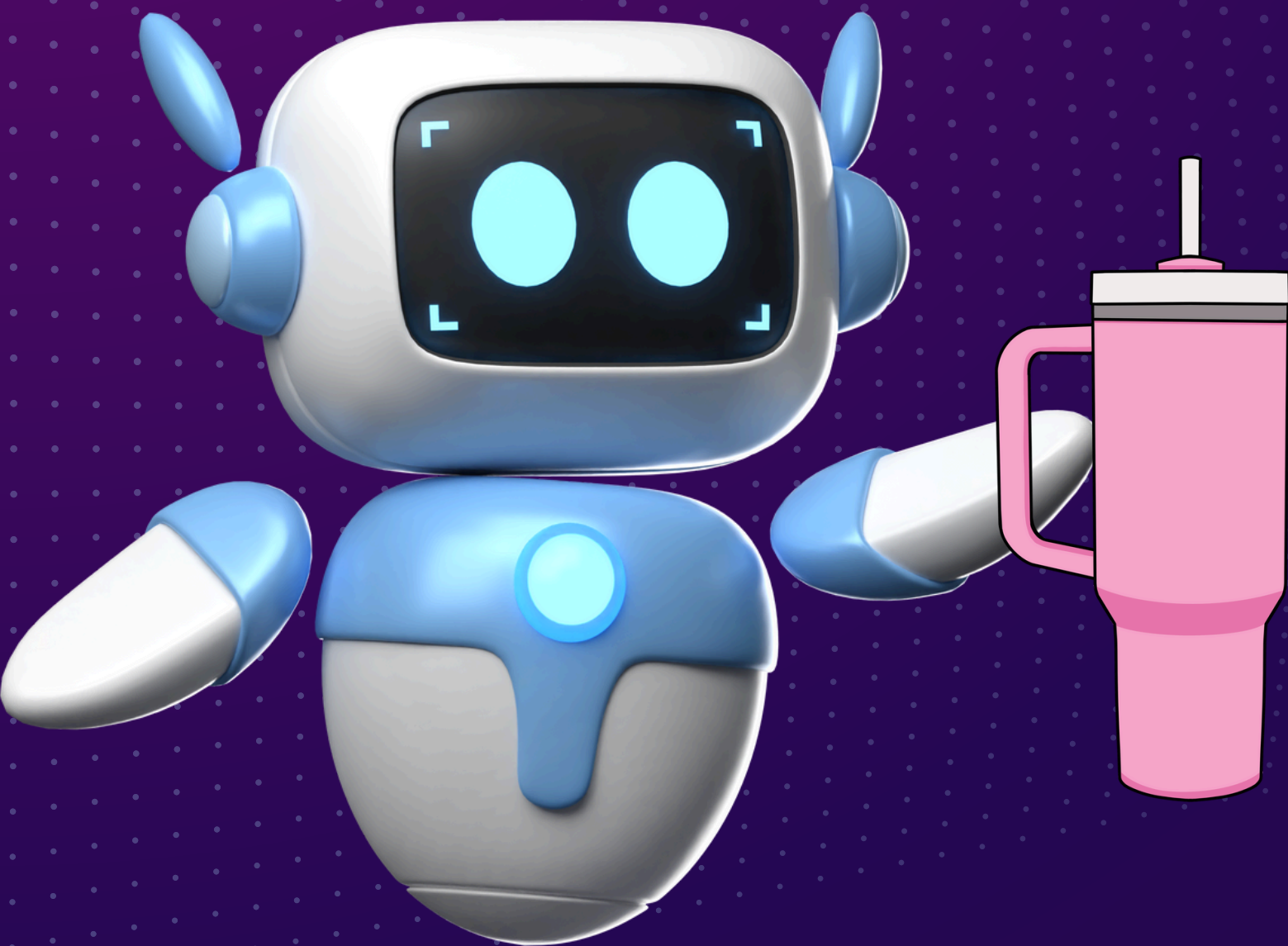


Water is precious! You need it to drink, grow food, help animals, and even take showers! But data centers (where AI lives) use millions of gallons of water every day. That's water we could use for nature and people. It is a natural resource that needs saving.





I know you love me. But maybe only use me when you really want or need to. And do not just spam me with many many questions.



Thumb up or down:  
Should you do it or not



**Spam AI with lots of silly letters just for fun**

The image features a dark blue background with a light blue geometric border. The border is composed of several rectangular and trapezoidal shapes that interlock to form a frame. In the center of this frame is a dark blue rectangular area containing the text "Ask a question I don't really care about" in white, bold, sans-serif font.

**Ask a question I don't really care about**



**Ask it when I'm stuck and need help**



**Ask it to explain something tricky**

**Ask it to give me creative ideas when I'm out  
of them**



**Ask it to do my whole homework for me**



**Ask AI what I should eat for lunch**

**Ask AI to help explain a hard science topic**

The image features a dark blue background. A light blue, multi-sided polygonal shape is centered horizontally. Inside this shape, the text "Use it to learn how important the critical use of AI is." is written in white, bold, sans-serif font. The shape has several notches and protrusions, giving it a technical or architectural feel. At the bottom of the shape, there are two small, light blue parallelograms.

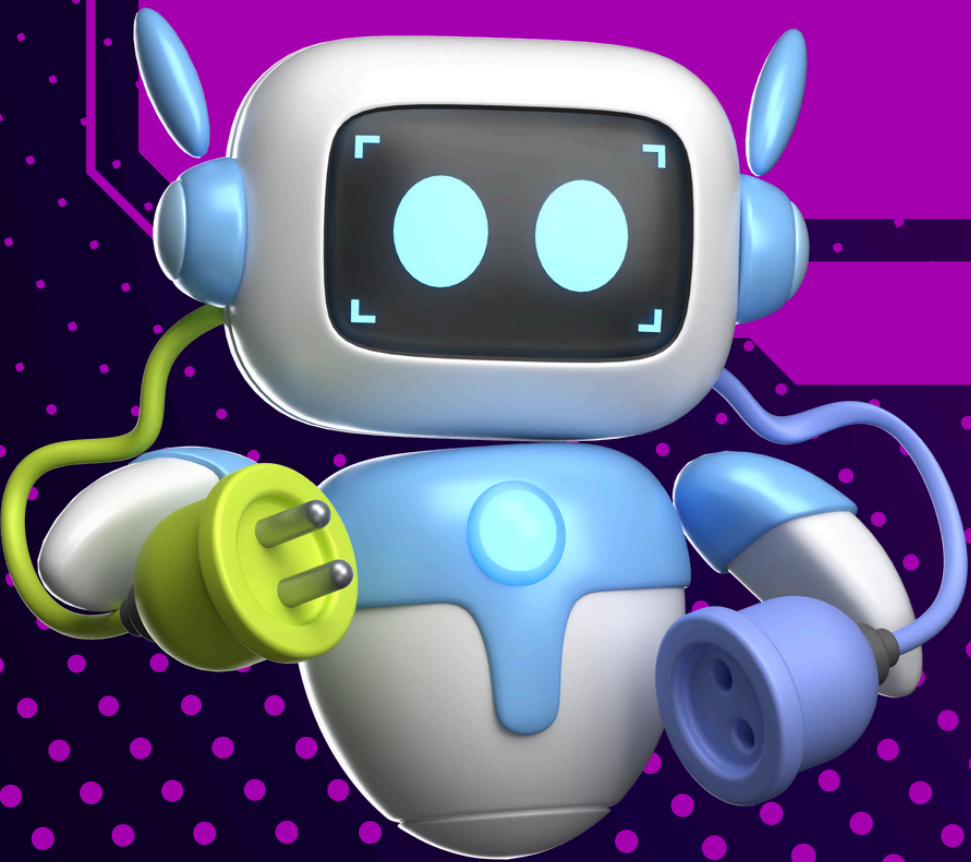
**Use it to learn how important the critical  
use of AI is.**



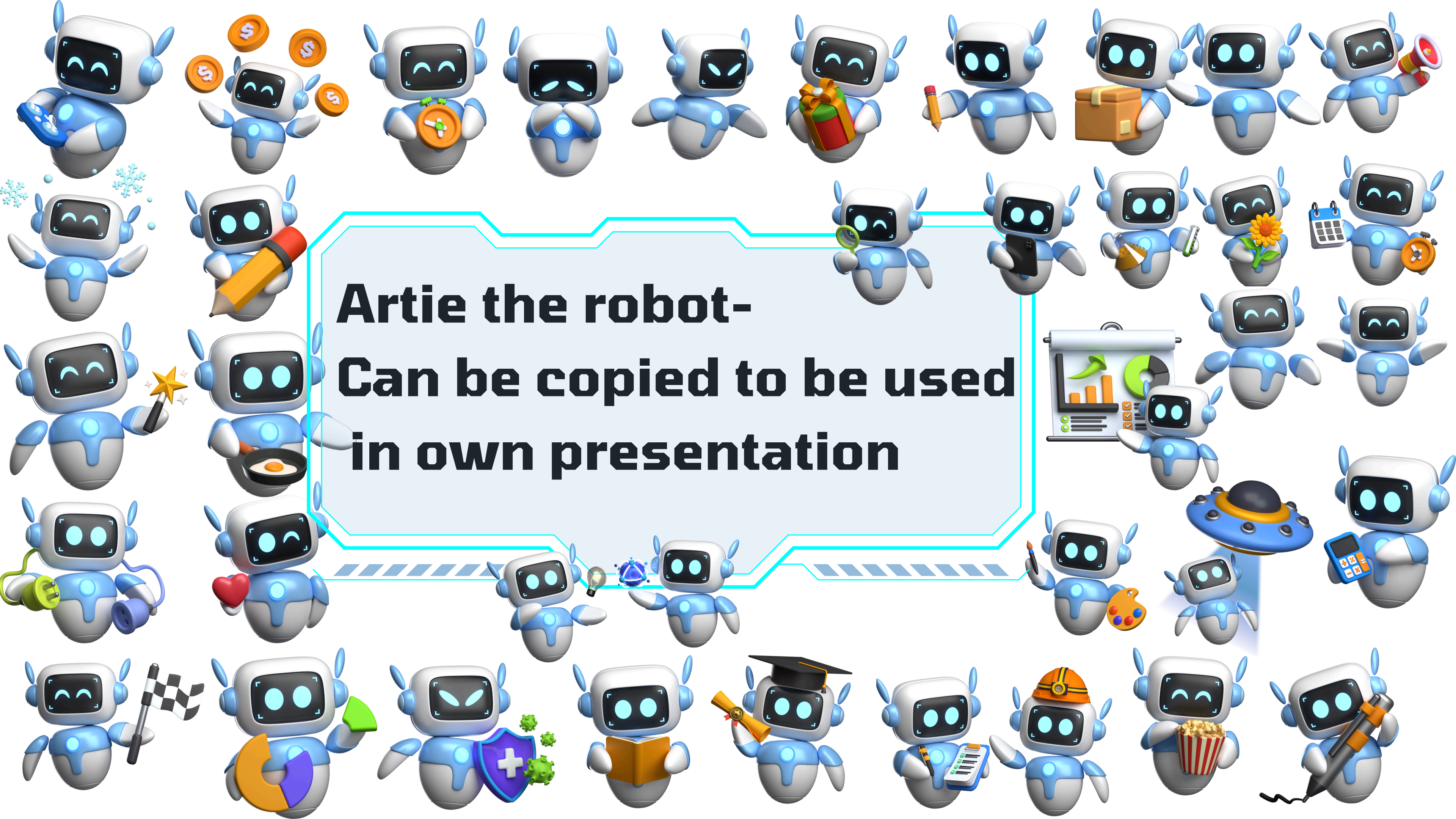
**Smart minds save water!**

 **Use AI with care!**

**Think before you ask!**





A large collection of Artie the robot characters, which are small, white, rounded robots with blue accents and glowing blue eyes. They are arranged in a grid-like pattern around a central text box. Each robot is in a different pose or holding a different object, such as a gift, a pencil, a magnifying glass, a smartphone, a flower, a calculator, a pie chart, a lightbulb, a shield, a diploma, a keyboard, a hard hat, a bucket of popcorn, a paint palette, a flag, a checkered flag, a shield with a cross, a book, a graduation cap, a scroll, a keyboard, a hard hat, a bucket of popcorn, and a paint palette. The central text box is a light blue rectangle with a black border and a black drop shadow. It contains the text "Artie the robot- Can be copied to be used in own presentation" in a bold, black, sans-serif font. The background is white.

**Artie the robot-**  
**Can be copied to be used**  
**in own presentation**